

# Mobello

Material Selection    Leather and Fabrics

This book contains:

Wood selection  
Oil description  
Fabric selection

## From Mobello to our dear Customers

We know that our customers value natural materials, longevity, timeless design, convenience, and ease of maintenance.

Our furniture is built to last, and we only use materials of highest quality, including pure handcrafted solid wood, to ensure the durability of our products.

# Wood and Oil

Description

# Wood Data Sheet

## European Walnut

The hardness of walnut wood is moderate, the fibers are fine and uniform and it has excellent durability. The surface of walnut furniture requires only simple processing, and the wood grains leave rustic impression.

The color of the walnut kernel gradually changes from light brown to dark chocolate, while its base color is accompanied by purple and darker stripes, so the furniture made in this way is more than ordinary.

The moisture content of walnut is relatively low, so external conditions have little to no effect on moisture.

The wood structure of walnut is relatively sensitive and belongs to a medium hardness type of wood, so its core has a strong anti-corrosive ability, and it is quite difficult to deform furniture made of this wood.

## European Oak

European oak has an even color tone and there are no greater contrasts between lighter and darker shades. European oak is known by its distinctive variations known as medullary rays. European oak has a higher proportion of tannins and less sapwood, so when subjected to drying or aging processes, it absorbs stains and tolerates these technical procedures very well.

Oak wood is a raw material of exceptional quality and is considered the most valuable raw material in the production of furniture, along with walnut, of course. It has a fine texture, hardly absorbs water and is resistant to corrosion.

The texture of oak wood is dense and thick, and the color is elegant and beautiful. It is suitable for creating a retro and elegant style.

Advantages: strong corrosion resistance, wear-resistant surface, dense texture, elegant and beautiful color.



# Oil Data Sheet

## Natural Hardwax Oil

Natural Hardwax Oil is a high-performance and fast air-drying wood finish based on natural vegetable oils with high penetration (sunflower oil, soya oil, thistle oil, carnauba wax and candelilla wax), paraffin, titanium dioxide white pigment, siccatives (drying agents) and water-repellent additives.

Deaerated white spirit (benzene-free).

The hardwax oil is extremely suitable for production of beautiful, durable and smooth furniture, offering strong and long-lasting protection combined with an effective and flexible application process on the roller coater or dry cloth. Easy and flexible handling in production. Microporous surface allows the wood to breathe and reduces swelling and shrinkage.

Resistant to wine, beer, cola, coffee, tea, fruit juice, milk and water according to DIN 68861-1A – no water spots. When dry, finish is safe for humans, animals and plants and is suitable for children's toys as per EN 71.3 (European norm) and is saliva-resistant and sweatproof according to DIN 53160 (German industrial norm). This hardwax oil is odourless after drying.

### General specifications:

- Extreme protection of the wood;
- Factory-finished floors and furniture, ready for installation;
- No additional on-site surface treatment is required;
- Available in customized colours.



# Wood and Oil

## Selection

### Oak Solid Wood



Desmond



Amber



Malibu

### Walnut Solid Wood



Roma



Twilight

# Leather and Fabrics

Description

# Material Data Sheet

## Natural Leather

Cow Hide Leather is timeless and sturdy. It is a semi-aniline, pigmented leather and it is one of the kinds, especially considering that it is produced out of animal hides that are byproducts (coming from animals that were slaughtered only for the meat production), and not originally for leather production. So, it is a kind of sustainability and a way to reduce leftover waste of meat production, for other purposes. Dyed-through in the drum, with high-class dye stuffs. Because each hide is unique, light variations between the hides, per production batch, may be noticeable, and since it is a natural occurring process, it adds natural beauty to the leather.

Cow Hide Leather offers a smooth and nice feel to the touch. That means it's supple and flexible.

## Recycled Fabric

There are things important and more important. For us it is our environment. The fabric we use is made by technology that uses yarn from recycled material. Thirty seven (37) recycled PET bottles turn into one metre of the fabric and the whole manufacturing process is less harmful to the environment.

The pilling of fabrics is a natural process and may not be completely eliminated and in case of fabric catching on sharp objects, the yarn may come out. The operation of UV light and sources of heat may cause fabric discolouration (this refers mainly to intensive colours) and this fabric fulfils the requirements of the EU regulation concerning hazardous chemicals (REACH) no 1907/2006, annex XVII.





# Leather

## Designer's Choice Colors



Midnight

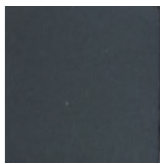


Luana

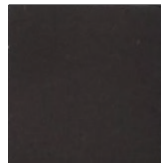


Ivory

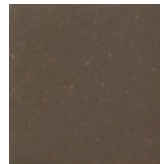
### Other colors (minimum quantity required)



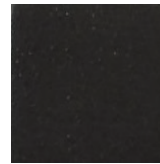
1



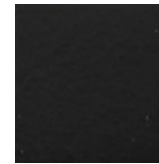
2



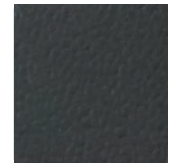
3



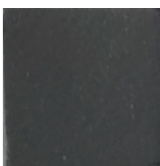
4



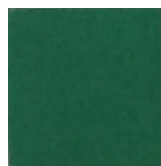
5



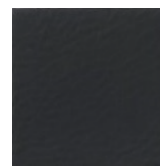
6



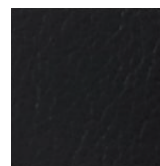
7



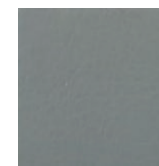
8



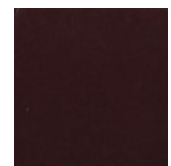
9



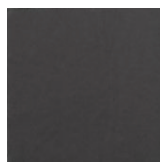
10



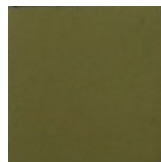
11



12



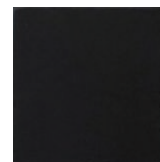
13



14



15



16

# Fabric

## Designer's Choice Colors



Leilani



York



Milano

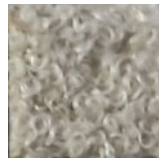
### Other colors (minimum quantity required)



1



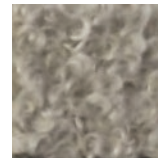
2



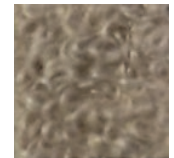
3



4



5



6



7



8



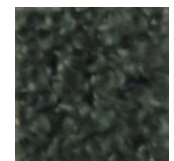
9



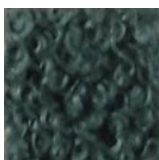
10



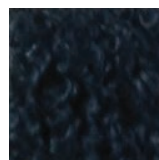
11



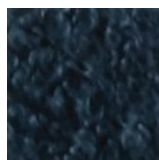
12



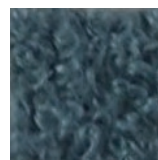
13



14



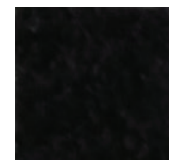
15



16



17



18

# Fabric

## Designer's Choice Colors



Orchid

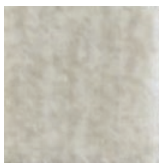


Chicago



Scarlett

### Other colors (minimum quantity required)



1



2



3



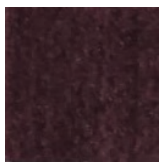
4



5



6



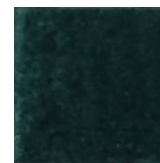
7



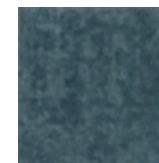
8



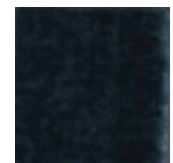
9



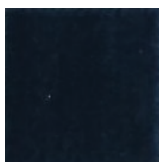
10



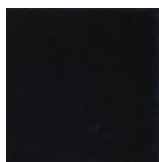
11



12



13



14



15



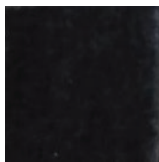
16



17



18



19



20



21



**MOBELLO**